



|Form 5500 Insights

Every year, most employers file a Form 5500 for each qualified plan that they sponsor. The purpose of the Form 5500 is to provide required information to the Department of Labor (DOL), but it can also provide valuable insight to the plan sponsor.

SUMMER 2022

The Form 5500 has several “types” and the type of form you file will vary based on the size of your plan. The Form 5500-SF is generally for small plans with under 100 participants and the Form 5500, which requires a number of attached schedules, is generally for large plans with 100 or more participants. Additionally, the full Form 5500 requires an accountant’s audit. In some cases, even small plans may be required to file a Form 5500 if the plan assets include employer securities or if the plan is considered a multi-employer or pooled employer plan.

There is an even briefer version of the 5500 series called the 5500-EZ. This version of the 5500 is typically filed by one-participant plans (usually the self-employed (and spouse) or one or more partners (and spouses)). The following are examples of the useful information provided on the Form 5500-SF or Form 5500:

PARTICIPANT COUNT

Small plan vs large plan

- Whether your plan is considered a large or small plan depends on the number of eligible participants at the beginning of the plan year. This includes terminated participants with an account balance as well as active participants without a balance. As your count gets closer to 100 participants, you will need to plan for the additional work and expense of becoming a large plan, which is when your Form 5500 requires an accountant’s audit be attached when filed.
- If you file a Form 5500-SF as a small plan, the 80-120 rule will apply. This means that if your participant count

remains under 120, you can continue to file Form 5500-SF as a small plan and do not require an audit. Once your beginning of the plan year count reaches 121, you will then be considered a large plan with an audit requirement.

- If you are a brand-new plan, though, and have over 100 participants on the first day of the first plan year, the 80-120 rule does not apply and you will require an audit. The 80-120 rule allows you to file as you did the prior year, and new plans do not have a filing for the prior year.

Eligible participants vs active participants with an account balance

- In addition to tracking eligible participants, the number of active participants with an account balance is also listed. This shows you how many of your eligible active participants have a \$0 balance.
- If your plan provides for your participants to contribute 401k deferrals, automatic enrollment is an option to increase participation. In this case they must opt out, rather than opt in.

Terminated participants with an account balance

- As this number increases, it is a good time to review the list of terminated participants with account balances. If a participant has an account balance over \$5,000, they generally must make a written election in order to withdraw the funds either as a cash distribution or rollover to an IRA or another qualified plan. However, smaller balances may be eligible for automatic payment without the participant’s

election if the terms of the plan allow mandatory distributions (these may also be referred to as force-out distributions).

- If you are getting close to having 100 participants, distributions to terminated participants is one way to help lower the plan's participant count and avoid the additional expense of being a large plan.

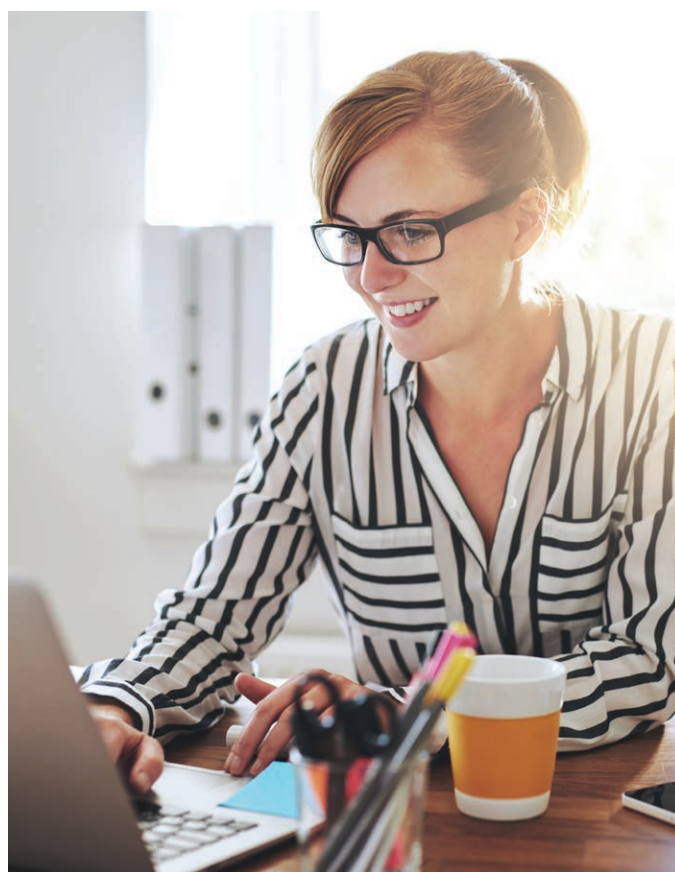
ERISA FIDELITY BOND COVERAGE AMOUNT

- An ERISA fidelity bond is a type of insurance that protects the plan against losses caused by acts of fraud or dishonesty.
- The dollar amount of your bond in effect for the plan year is listed on the form. The required coverage amount is the greater of \$1,000 or 10% of plan assets as of the first date of the plan year. If less, or listed as \$0, it can be a red flag to the DOL.
- If it is the first year of the plan and the form shows a \$0 balance at the start of the year, an estimated asset balance should be used for the 10% calculation when considering the level of coverage for your plan's bond.
- In the event you did not establish a bond by the close of the plan year, a bond provider may be able to assist you with a policy that provides retroactive coverage. Some policies can also include an inflation guard going forward so that as plan assets increase, the bond coverage automatically increases to the required amount.
- Not sure where to obtain a fidelity bond? Your property and casualty insurance agent may be able to add this as a rider to your current business policies or your TPA may be able to provide contact information for a vendor that they have seen in the industry.
- So, what happens if I don't have a bond? The correction for not having a bond is to get a bond put in place as soon as possible. However, having an insufficient bond amount noted on the Form 5500 could lead to an IRS or DOL audit where they may review more than just the bond amount.

LATE DEPOSITS OF EMPLOYEE CONTRIBUTIONS AND LOAN REPAYMENTS

- Another red flag to the DOL is the dollar amount of late deposits. There is a safe harbor deposit rule for small plans that states that deferrals and loan repayments must be deposited to the plan no later than the 7th business day following the paycheck date. Large plans have less time with contributions required to be remitted on the earliest date possible instead of within 7 business days.
- Late employee contributions or loan repayments for the plan year are reported on the Form 5500 or Form 5500-SF. In addition, if the correction for late deposits took place the following year, the amount is reported again on that year's Form 5500.

Your Form 5500 preparer, often your TPA, will prepare the form on your behalf for your review and signature. They will be able to help guide you through the information that is reported on the form and be sure you understand the information as it reflects on the plan year. The more you understand the Form 5500, the more proactive discussions you can have.



New IRS Pre-Examination Compliance Program Announced

In June 2022, the IRS began piloting a pre-examination retirement plan compliance program. This is beneficial to plan sponsors because it provides an opportunity for plan sponsors to correct mistakes at a reduced cost and possibly avoid a full IRS examination. Anytime you receive a correspondence from the IRS or DOL, you should inform your TPA or service provider as soon as possible to determine if a response is needed. In some situations, no action is required. In this case, however, the letter opens a 90-day window. Within that time frame, you will need to:

- Review your plan document and operations.
- Determine if they meet current tax law requirements.
- Self-correct any mistakes that qualify under the Employee Plans Compliance Resolution System (EPCRS).
- Respond to the letter and provide your conclusion:
 - No mistakes were found.
 - Mistakes were found and self-corrected (provide the details of the error and correction).
 - Mistakes were found, but they do not qualify for self-correction. You may request a closing agreement. This means that the cost could be much less than if the IRS found the mistakes during an IRS examination.

Your TPA or service provider will be able to review the plan information with you to ensure that all necessary steps were previously taken to maintain compliance. If an issue is discovered as part of this review, they can discuss the correction options available. Of course, you don't have to wait until you receive a letter from the IRS to be sure your plan is compliant! Understanding the terms of the plan and operating the plan according to the document are very important actions to help avoid mistakes.

Once you submit your response, it is reviewed to see if they agree with your conclusion. The IRS will either issue a closing letter or conduct a limited or full scope examination. The intention is that this program will reduce taxpayer burden and the shorten the time spent on retirement plan examinations. The end date of this pilot program is not

known, but the process may continue after the pilot period if they find it to be successful.

If you do not provide a response, you will be contacted to schedule the examination. Of course, this is the least favorable option. It is best not to ignore any letter from the IRS or DOL. It is in the best interest of your plan to take action when it is requested, and a 90-day window can close pretty fast!



Q&A Corner

Q: I didn't file my 12/31/21 plan year end Form 5500 by 7/31/22, now what?

A: Contact your Form 5500 preparer! First, confirm whether or not an extension applies. This would occur with a Form 5558 filed before 7/31, or possibly a special extension or automatic extension. If so, you have until 10/15/22 to file the Form 5500. No extension? The Delinquent Filer Voluntary Compliance Program (DFVCP) is a DOL program designed for this purpose. Using this program, the maximum penalty is \$750 for a small plan and \$2,000 for a large plan. This is much lower than the IRS late filing penalty (\$250 a day, up to \$150,000) and the DOL late filing penalty (up to \$2,529 per day, with no maximum).

Q: What if I didn't sign the document restatement for my 401(k) Profit Sharing plan that was due by 7/31/22?

A: This plan document restatement (commonly referred to as Cycle 3, Tricycle or Post PPA) required signatures by 7/31/22. Contact your TPA as soon as possible, or your document provider if handled by someone other than your TPA. The steps to ensure your document remains in compliance will vary based on the type of plan document and provisions included, but the options are not as cut and dry as a late Form 5500. Be sure to act promptly!



SHORE TOMPKINS

ACTUARIAL RESOURCES, LLC



Pension solutions that **perform.**

- » 401k Plans
- » 403b Plans
- » Profit Sharing Plans
- » Cash Balance Plans
- » Defined Benefit Plans
- » Cross-Tested Plans

2 N. Riverside Plaza, Suite 1230, Chicago, Illinois 60606

tel 312.762.5960 fax 312.762.5988

www.ShoreTompkins.com

Upcoming Compliance Deadlines for Calendar-Year Plans

September 15th

Required contribution to Money Purchase Pension Plans, Target Benefit Pension Plans, and Defined Benefit Plans.

Contribution deadline for deducting 2021 employer contributions for those sponsors who filed a tax extension for Partnership or S-Corporation returns for the March 15, 2022 deadline.

September 30th

Deadline for certification of the Annual Funding Target Attainment Percentage (AFTAP) for Defined Benefit plans for the 2022 plan year.

October 17th

Extended due date for the filing of Form 5500 and Form 8955 for plan years ending December 31, 2021.

Due date for 2022 PBGC Comprehensive Premium Filing for Defined Benefit plans.

Contribution deadline for deducting 2021 employer contributions for those sponsors who filed a tax extension for C-Corporation or Sole-Proprietor returns for the April 18, 2022 deadline.

Due date for non-participant-directed individual account plans to include Lifetime Income Illustrations on the annual participant statement for the plan year ending December 31, 2021.

